

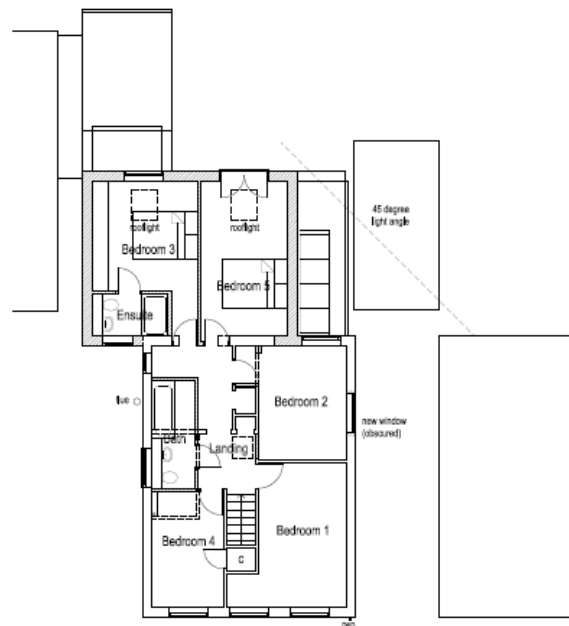
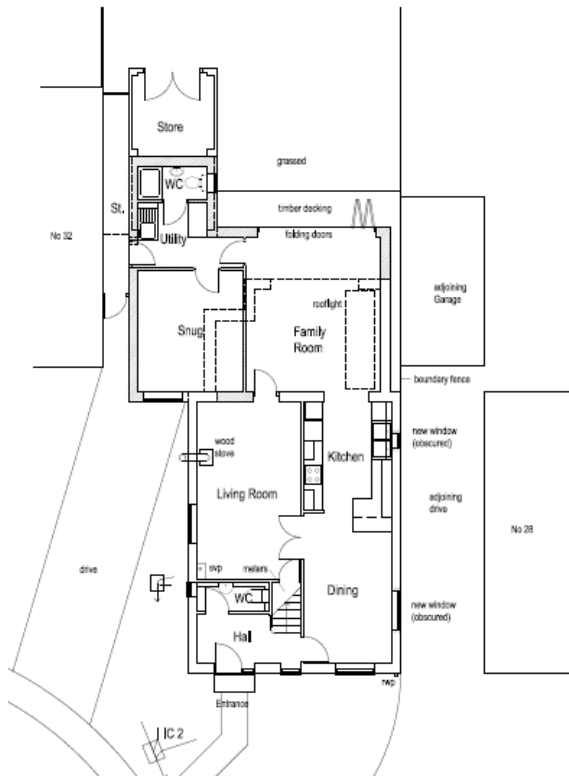
Item 5.05

4/00158/16/FHA - PART TWO STOREY AND PART SINGLE STOREY REAR EXTENSION TO REPLACE EXISTING CONSERVATORY

30 ELM TREE WALK, TRING, HP23 5EJ



Mapping contents (c) Crown copyright and database rights 2015 Ordnance Survey 100095207



Item 5.05

4/00158/16/FHA - PART TWO STOREY AND PART SINGLE STOREY REAR EXTENSION TO REPLACE EXISTING CONSERVATORY

30 ELM TREE WALK, TRING, HP23 5EJ

